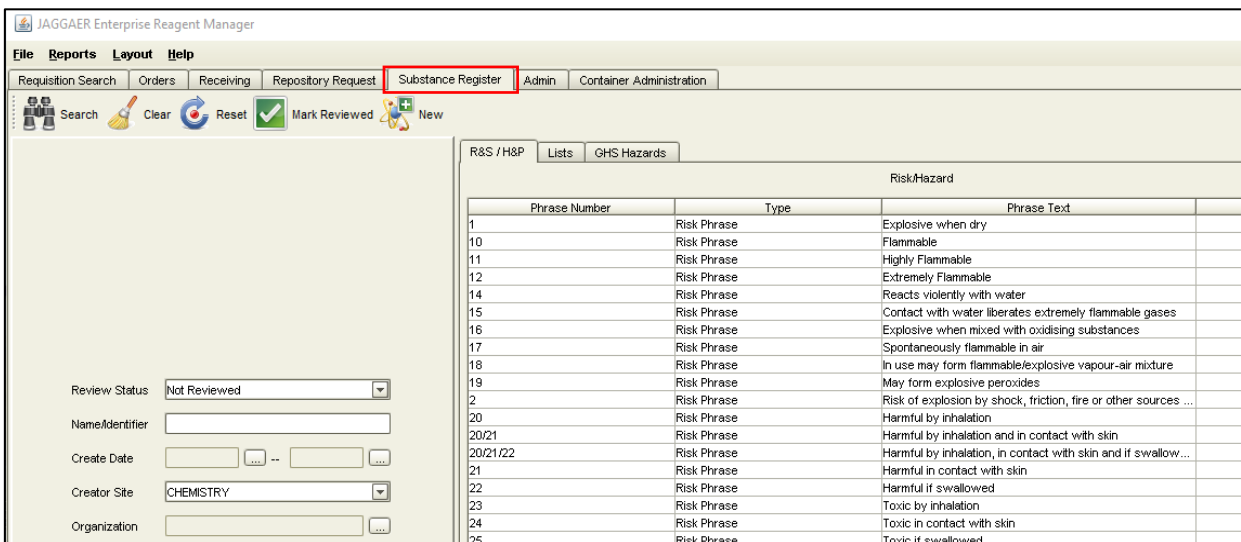


How to Obtain GHS Summary Data by Hazard Type

How to Obtain GHS Summary Data by Hazard Type



JAGGAER Enterprise Reagent Manager

File Reports Layout Help

Requisition Search Orders Receiving Repository Request **Substance Register** Admin Container Administration

Search Clear Reset Mark Reviewed New

R&S / H&P Lists GHS Hazards

Risk/Hazard			
Phrase Number	Type	Phrase Text	
1	Risk Phrase	Explosive when dry	
10	Risk Phrase	Flammable	
11	Risk Phrase	Highly Flammable	
12	Risk Phrase	Extremely Flammable	
14	Risk Phrase	Reacts violently with water	
15	Risk Phrase	Contact with water liberates extremely flammable gases	
16	Risk Phrase	Explosive when mixed with oxidising substances	
17	Risk Phrase	Spontaneously flammable in air	
18	Risk Phrase	In use may form flammable/explosive vapour-air mixture	
19	Risk Phrase	May form explosive peroxides	
2	Risk Phrase	Risk of explosion by shock, friction, fire or other sources ...	
20	Risk Phrase	Harmful by inhalation	
20/21	Risk Phrase	Harmful by inhalation and in contact with skin	
20/21/22	Risk Phrase	Harmful by inhalation, in contact with skin and if swallow...	
21	Risk Phrase	Harmful in contact with skin	
22	Risk Phrase	Harmful if swallowed	
23	Risk Phrase	Toxic by inhalation	
24	Risk Phrase	Toxic in contact with skin	
25	Risk Phrase	Toxic if swallowed	

Review Status: Not Reviewed

Name/Identifier:

Create Date: --

Creator Site: CHEMISTRY

Organization:

Review Status: All

Name/Identifier:

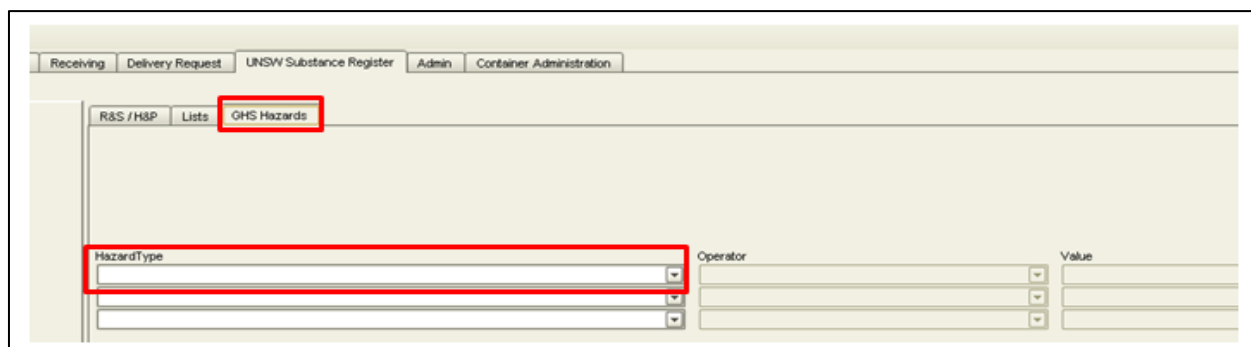
Create Date: --

Creator Site: All

Organization:

- ▶ Login into Jaggaer CIM Operations Module
<http://hmdg.unsw.edu.au/OPS>
- ▶ Click on the **Substance Register** tab
- ▶ Anytime when searching chemical on the Substances Register press **Clear** to broaden the search to include ALL

How to Obtain GHS Summary Data by Hazard Type



HazardType	Operator	Value
Flammable liquids	=	Category 1

HazardType	Operator	Value
Flammable liquids	>=	Category 3

HazardType	Operator	Value
Flammable liquids	>=	Category 3
Acute toxicity	>=	Category 3

▶ Click on the **GHS Hazards** tab

▶ Click on the down arrow for Hazard type to select your hazard class. In this case let's search the substance register for all Flammable Liquids of hazard category 1 (i.e. packing group I). Choose "=" in the Operator field and choose Category 1.

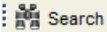
▶ If you wanted to search for Category 1, 2 and 3 flammable liquids you would choose Operator ">=3"

▶ If you wanted to look for substances that were both flammable AND toxic your search would look like this:

▶ This would return all substances that were either hazard category 1, 2 or 3 flammable liquids AND either hazard category 1, 2 or 3 toxics.

How to Obtain GHS Summary Data by Hazard Type

Common Name	Substance Type	Physical State	Suppress Contain...	Reviewed By	Review Date	CAS #	Registration Date	Creator	Creator P
1,1,1-Trifluoroacet...			<input type="checkbox"/>	ERMSUPERUSER, ...	05-Dec-2013	421-50-1	24-Mar-2012	ERMSUPERUSER	
Methyl formate			<input type="checkbox"/>	ERMSUPERUSER, ...	05-Dec-2013	107-31-3			
Furan			<input type="checkbox"/>	ERMSUPERUSER, ...	05-Dec-2013	110-00-9			
(+/-)-Propylene oxi...			<input type="checkbox"/>	ERMSUPERUSER, ...	05-Dec-2013	75-98-9			
1-Pentene			<input type="checkbox"/>	ERMSUPERUSER, ...	05-Dec-2013	109-67-1			
2-Chloropropene			<input type="checkbox"/>	ERMSUPERUSER, ...	05-Dec-2013	557-98-2			
Isopropylamine			<input type="checkbox"/>	ERMSUPERUSER, ...	05-Dec-2013	75-31-0			
2-Methyl-1-buten-...			<input type="checkbox"/>	ERMSUPERUSER, ...	05-Dec-2013	78-80-8			
3-Methyl-1-butene			<input type="checkbox"/>	ERMSUPERUSER, ...	05-Dec-2013	563-45-1			
Trichlorosilane			<input type="checkbox"/>	ERMSUPERUSER, ...	05-Dec-2013	10025-78-2			
Tetramethylsilane			<input type="checkbox"/>	ERMSUPERUSER, ...	05-Dec-2013	75-76-3			
2-Butyne			<input type="checkbox"/>	ERMSUPERUSER, ...	05-Dec-2013	503-17-3			
1,4-Pentadiene			<input type="checkbox"/>	ERMSUPERUSER, ...	05-Dec-2013	591-93-5			
2-Methyl-1-butene			<input type="checkbox"/>	ERMSUPERUSER, ...	05-Dec-2013	563-46-2			
2-Methylbutane			<input type="checkbox"/>	ERMSUPERUSER, ...	05-Dec-2013	78-78-4			
Acetaldehyde			<input type="checkbox"/>	ERMSUPERUSER, ...	05-Dec-2013	75-07-0			
Methylamine			<input type="checkbox"/>	ERMSUPERUSER, ...	05-Dec-2013	74-89-5			
1,1-Dichloroethylene			<input type="checkbox"/>	ERMSUPERUSER, ...	05-Dec-2013	75-35-4			
Trimethylsilylmet...			<input type="checkbox"/>	ERMSUPERUSER, ...	05-Dec-2013	1822-00-0	21-Nov-2012	ERMSUPERUSER	

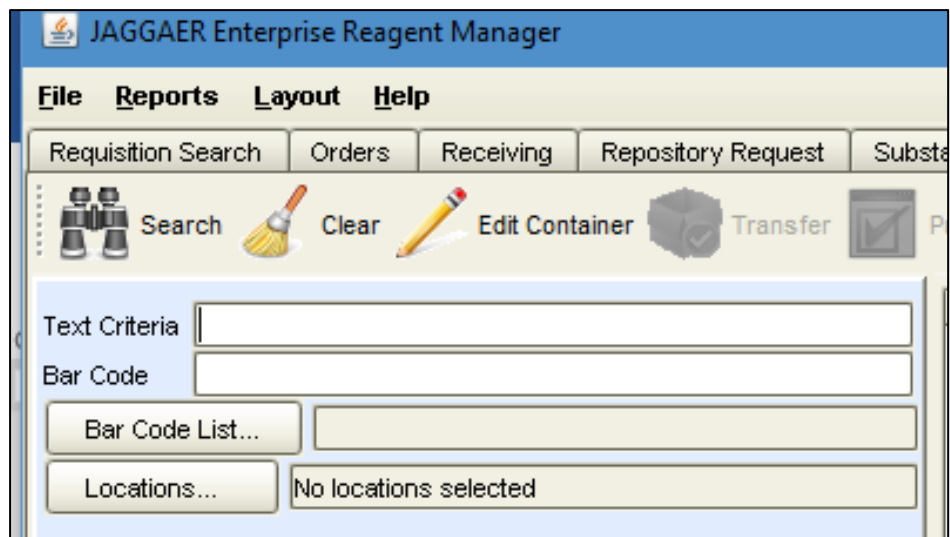
In this case let's search the substance register for all Flammable Liquids of hazard category 1 (i.e. packing group I) and press  Search

- ▶ Click on any substance in the results set, then right click and 'Select All' until all substances are highlighted

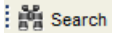
Common Name	Substance Type	Physical State	Suppress Contain...	Reviewed By	Re
1,1,1-Trifluoroacet...			<input type="checkbox"/>	ERMSUPERUSER, ...	05-Dec
Methyl formate			<input type="checkbox"/>	ERMSUPERUSER, ...	05-Dec
Furan				R, ...	05-Dec
(+/-)-Propylene oxi...				R, ...	05-Dec
1-Pentene				R, ...	05-Dec
2-Chloropropene				R, ...	05-Dec
Isopropylamine				R, ...	05-Dec
2-Methyl-1-buten-...				R, ...	05-Dec
3-Methyl-1-butene				R, ...	05-Dec
Trichlorosilane				R, ...	05-Dec
Tetramethylsilane				R, ...	05-Dec
2-Butyne				R, ...	05-Dec
1,4-Pentadiene				R, ...	05-Dec
2-Methyl-1-butene				R, ...	05-Dec
2-Methylbutane				R, ...	05-Dec
Acetaldehyde				R, ...	05-Dec
Methylamine				R, ...	05-Dec
1,1-Dichloroethylene				R, ...	05-Dec
(Trimethylsilyl)met...				R, ...	05-Dec
3,3-Dimethyl-1-but...				R, ...	05-Dec

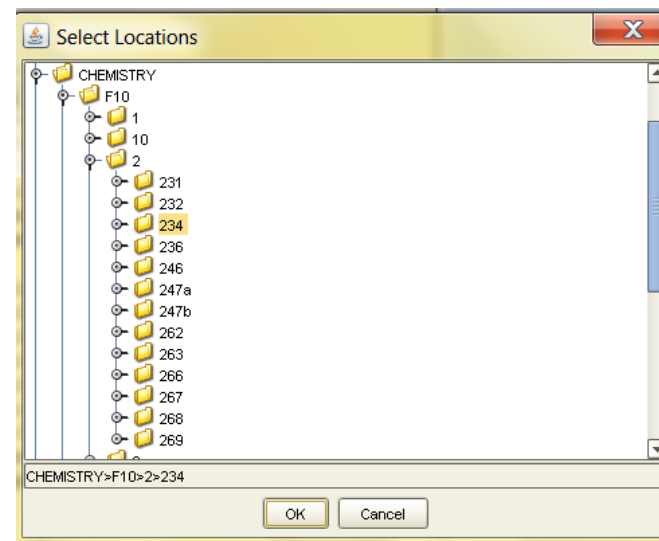
- ▶ Then choose 'Send Materials to Container Search'

How to Obtain GHS Summary Data by Hazard Type



Status	ALL	▼
Owner		...
Organization		...
Date Type		▼
Date		... -- ...

- ▶ This will open the location window where you can select your location of choice by clicking on the Locations tab, opening the locations tree and choosing your location (or sub-location e.g. flammable liquid cabinet)
- ▶ Check to ensure the Status is ALL
- ▶ In this example, we will choose lab 234 in Chemistry. Press 'OK' then press 



How to Obtain GHS Summary Data by Hazard Type

Bar Code	Label Name	CAS #	Current Amount	Current Amount U.	Container Status	Site	Building	Floor	Room	Sublocation	Original Amount	Original Amount U.
154413	Diethyl ether	60-29-7	2.5LT		DISPOSED	CHEMISTRY	F10	2	234	Flam Liq Cab 3	2.5LT	
154415	Diethyl ether	60-29-7	2.5LT		AVAILABLE	CHEMISTRY	F10	2	234	Flam Liq Cab 3>Shelf 2	2.5LT	
154414	Diethyl ether	60-29-7	2.5LT		AVAILABLE	CHEMISTRY	F10	2	234	Flam Liq Cab 3>Shelf 2	2.5LT	
91829	Diethyl ether	60-29-7	2.5KG		AVAILABLE	CHEMISTRY	F10	2	234	Flam Liq Cab 3>Shelf 2	2.5KG	
89312	2,2,2-Trifluoroethanehiol	1544-53-2	250G		DISPOSED	CHEMISTRY	F10	2	234	Fridge 1>Shelf 5	250G	
31826	Furan	110-00-9	500ML		INTRANSIT	CHEMISTRY	F10	2	234	Flam Liq Cab 9	500ML	
32998	Diethyl ether	60-29-7	4L		DISPOSED	CHEMISTRY	F10	2	234	Flam Liq Cab 10>Shelf 1	4L	
66080	Diethyl ether	60-29-7	2.5L		INTRANSIT	CHEMISTRY	F10	2	234	Flam Liq Cab 9	2.5L	
56181	Diethyl ether	60-29-7	2.5L		INTRANSIT	CHEMISTRY	F10	2	234	Flam Liq Cab 9	2.5L	
92127	Diethyl ether	60-29-7	2.5L		DISPOSED	CHEMISTRY	F10	2	234	Flam Liq Cab 10>Shelf 1	2.5L	
89518	Diethyl ether	60-29-7	2.5L		DISPOSED	CHEMISTRY	F10	2	234	Flam Liq Cab 10>Shelf 1	2.5L	
64883	Diethyl ether	60-29-7	2.5L		DISPOSED	CHEMISTRY	F10	2	234	Flam Liq Cab 10>Shelf 1	2.5L	
32852	Diethyl ether	60-29-7	2.5L		DISPOSED	CHEMISTRY	F10	2	234	Flam Liq Cab 10>Shelf 1	2.5L	
15245	Diethyl ether	60-29-7	1.75L		DISPOSED	CHEMISTRY	F10	2	234	Flam Liq Cab 10>Shelf 1	1.75L	
89277	Diethyl ether	60-29-7	100ML		INTRANSIT	CHEMISTRY	F10	2	234	Bench L	100ML	
80986	Methylamine	74-89-5	250ML		AVAILABLE	CHEMISTRY	F10	2	234	Fridge 5>Shelf 1	250ML	
74135	Furan-d4	6142-90-1	1G		AVAILABLE	CHEMISTRY	F10	2	234	Fridge 5>Shelf 1	1G	
74134	Furan-d4	6142-90-1	1G		AVAILABLE	CHEMISTRY	F10	2	234	Fridge 5>Shelf 1	1G	

- ▶ All containers containing hazard category 1 flammable liquid will be returned

Bar Code	Label Name	CAS #	Current Amount	Current Amount U.	Container Status	Site	Building	Floor	Room	Sublocation	Original Amount	Original Amount U.
154413	Diethyl ether	60-29-7	2.5LT		DISPOSED	CHEMISTRY	F10	2	234	Flam Liq Cab 3	2.5LT	
154415	Diethyl ether	60-29-7	2.5LT		AVAILABLE	CHEMISTRY	F10	2	234	Flam Liq Cab 3>Shelf 2	2.5LT	
154414	Diethyl ether	60-29-7	2.5LT		AVAILABLE	CHEMISTRY	F10	2	234	Flam Liq Cab 3>Shelf 2	2.5LT	
91829	Diethyl ether	60-29-7	2.5KG		AVAILABLE	CHEMISTRY	F10	2	234	Flam Liq Cab 3>Shelf 2	2.5KG	
89312	2,2,2-Trifluoroethanehiol	1544-53-2	250G		DISPOSED	CHEMISTRY	F10	2	234	Fridge 1>Shelf 5	250G	
31826	Furan	110-00-9	500ML		INTRANSIT	CHEMISTRY	F10	2	234	Flam Liq Cab 9	500ML	
32998	Diethyl ether	60-29-7	4L		DISPOSED	CHEMISTRY	F10	2	234	Flam Liq Cab 10>Shelf 1	4L	
66080	Diethyl ether	60-29-7	2.5L		INTRANSIT	CHEMISTRY	F10	2	234	Flam Liq Cab 9	2.5L	
56181	Diethyl ether	60-29-7	2.5L		INTRANSIT	CHEMISTRY	F10	2	234	Flam Liq Cab 9	2.5L	
92127	Diethyl ether	60-29-7	2.5L		DISPOSED	CHEMISTRY	F10	2	234	Flam Liq Cab 10>Shelf 1	2.5L	
89518	Diethyl ether	60-29-7	2.5L		DISPOSED	CHEMISTRY	F10	2	234	Flam Liq Cab 10>Shelf 1	2.5L	
64883	Diethyl ether	60-29-7	2.5L		DISPOSED	CHEMISTRY	F10	2	234	Flam Liq Cab 10>Shelf 1	2.5L	
32852	Diethyl ether	60-29-7	2.5L		DISPOSED	CHEMISTRY	F10	2	234	Flam Liq Cab 10>Shelf 1	2.5L	
15245	Diethyl ether	60-29-7	1.75L		DISPOSED	CHEMISTRY	F10	2	234	Flam Liq Cab 10>Shelf 1	1.75L	
89277	Diethyl ether	60-29-7	100ML		INTRANSIT	CHEMISTRY	F10	2	234	Bench L	100ML	
80986	Methylamine	74-89-5	250ML		AVAILABLE	CHEMISTRY	F10	2	234	Fridge 5>Shelf 1	250ML	
74135	Furan-d4	6142-90-1	1G		AVAILABLE	CHEMISTRY	F10	2	234	Fridge 5>Shelf 1	1G	

- ▶ Click on any container, right click on it, 'Select All' then copy to an excel spreadsheet to sort, print, use in a report etc.

Note: School Administrators are able to run GHS reports on locations in their area.